

# TRX RESIDENCES



# The Exchange TRX, KL's world class precinct.

The Exchange TRX is the latest offering, borne out of Lendlease's expertise and proven record in global urban regeneration. It is the heartbeat of Tun Razak Exchange; a convergence of global influences that will redefine KL's Central Business District as Malaysia's first and only financial district.

# A lifestyle destination, a myriad of experiences.

An experiential retail centre seamlessly integrated with an activated city park above and linked to TRX Residences, The Exchange TRX is a perfect blend of purpose and design of world-class standing.

## TRX MASTERPLAN



### INTEGRATED LIVING

A truly world-class, integrated living concept that is directly linked to a purpose-built MRT station.

- 2.2mil sq.ft. retail centre with 500 outlets
- Premier urban residences, TRX Residences
- Activated City Park
- Luxury Lifestyle Hotel
- Campus-style Office

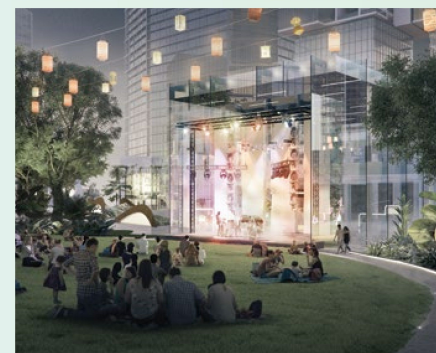
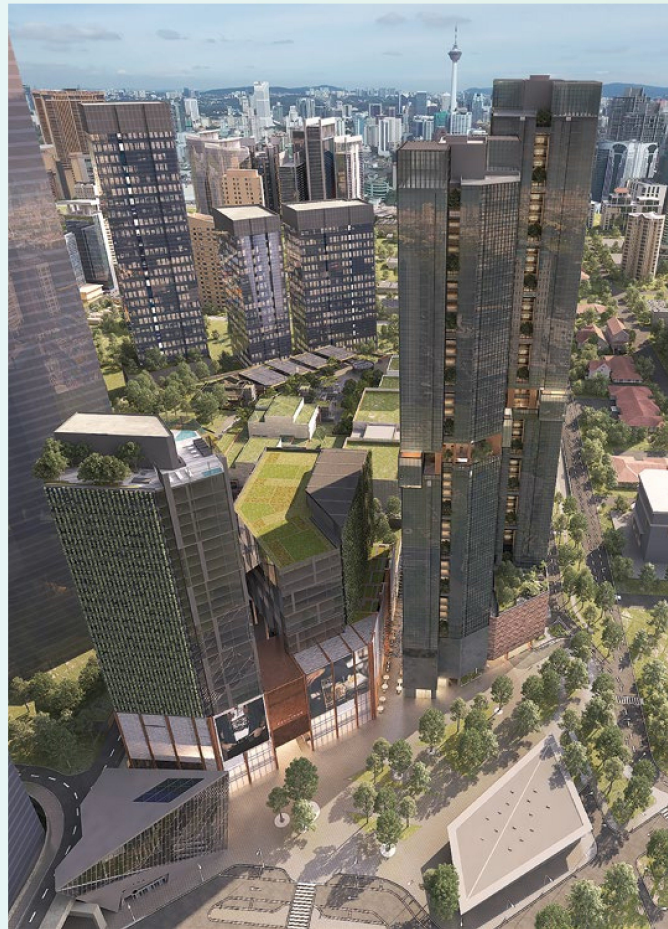
### SUSTAINABILITY






A world-class precinct built around sustainability featuring world-class park, recycled water, District Management, LEED (Leadership in Energy and Environmental Design) and GBI (Green Building Index) certification.

### CONNECTIVITY

The only precinct with world-class connectivity

- Direct access to purpose-built MRT station
- Direct access to SMART Tunnel
- Pedestrian walkways to Bukit Bintang and surroundings
- Wireless broadband access



-  Luxury Lifestyle Hotel
-  Premier Urban Residences
-  Campus-style Office
-  Experiential Retail Destination
-  Activated City Park

### FEATURES AND EXPERIENCES

- The park in the mall, the mall in the park
- Gastronomical dining
- Home of world events
- Flagship stores
- Artisan market lane

World class in so many ways,  
home to you.

Our vision is to create the best places. Every project is designed from the inside out, anticipating your every need and ensuring they are well met, with each component designed to captivate and delight.

TRX Residences continues this ethos; crafted with care so that your heart feels at home.



Value – crafted for today,  
seeded for the future.

Global integrated living standards have been incorporated within and around TRX Residences to protect your legacy into the future.



Quick access to absolute convenience



Environmentally conscious and energy efficient



Living environment and facilities that promote health and well-being



Community +app revolving around community needs



International safety standards



Future focused to offer smart living via car sharing, furnishing packages and lease management services\*

\*Subject to operation by third party

Designed with care.  
Crafted for you.

90,000 sq. ft. of facilities,  
just a lift ride away.

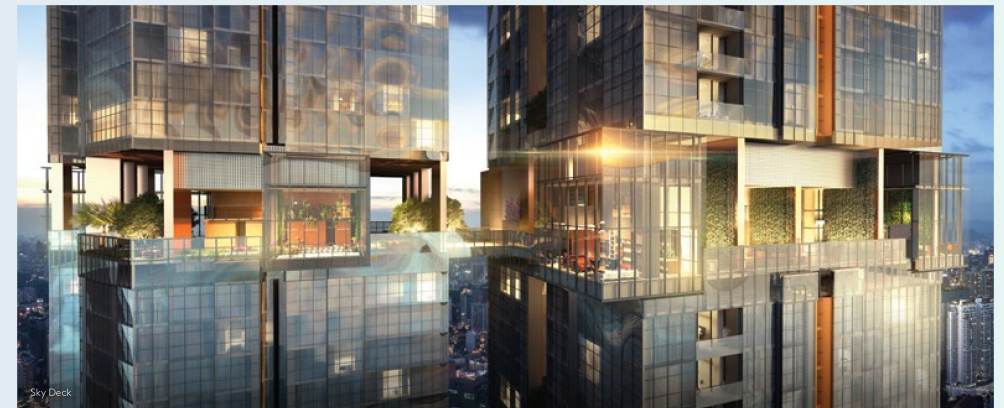


3 Bedroom - Living, Dining Room



The facilities are spread over different floors and cover leisure, health, well-being, entertainment and more. All conceptualised and delivered to accommodate your urban lifestyle, everything is within quick and easy reach. Celebrate life with confidence, within well-designed and safe spaces.

- Designed for casual collisions, and purposeful relationships
- Stylish venues for every occasion, right where you live
- City living needs living gardens to retreat to



Sky Deck



1 Bedroom - Master Bedroom

We take the aesthetics of good design further, ingeniously blending it with functionality to deliver optimal space in the right places. Your global lifestyle is well accommodated with accurate design and flexible applications.

- Fully-fitted Italian kitchen\*
- Colour scheme selection in the units\*\*
- Double-glazed curtain wall with low E glass for thermal and auditory comfort

1 BEDROOM	2 BEDROOMS	3 BEDROOMS
• 474 sqft - 721 sqft (44 sqm - 67sqm)	• 850 sqft - 1076 sqft (79 sqm - 100 sqm)	• 1184 sqft - 1636 sqft (110 sqm - 152 sqm)

\* Washing machine is not included  
\*\* Subject to availability



Conservatory



Centre of it all.



**TRX Residences  
Discovery &  
Experience Gallery**

📍 3.153155, 101.723181

TRX Residences Discovery and Experience Gallery  
Regal House, 1 Jalan U-thant (Off Jalan Tun Razak)  
55000 Kuala Lumpur, Malaysia

**SALES ENQUIRIES**  
**+6019-537 8128**

**A Joint Venture Between**

**TRX** **lendlease**  
TUN RAZAK EXCHANGE



DEVELOPER: LQ Residential 1 Sdn Bhd (1135343-P) • ADDRESS: Level 8, Menara Jcorp, 249, Jalan Tun Razak, 50400 Kuala Lumpur • DEVELOPER'S LICENSE: 19603-1/02-2022/01285 (L) • VALIDITY PERIOD: 15/02/2021 - 14/02/2022 • ADVERTISING & SALES PERMIT: 19603-1/02-2022/01285 (P) • VALIDITY PERIOD: 15/02/2021 - 14/02/2022 • APPROVING AUTHORITY: Dewan Bandaraya Kuala Lumpur • BUILDING PLAN NO: BP T4 OSC 2017 1462 • LAND TENURE: Freehold • EXPECTED COMPLETION: November 2023 • LAND ENCUMBRANCES: NIL • TYPE OF PROPERTY: Service Apartment Tower A & Tower B • DEVELOPMENT NAME: TRX Residences • CAR PARK: 1,020 • BUILT-UP: Type 1: 474 sq. ft., Type 1A: 538 sq. ft., Type 2: 624 sq. ft., Type 2A: 700 sq. ft., Type 2B: 721 sq. ft., Type 3: 850 sq. ft., Type 3A: 1,076 sq. ft., Type 4: 1,184 sq. ft., Type 5: 1,216 sq. ft., Type 5A: 1,259 sq. ft., Type 5B: 1,345 sq. ft., Type 6: 1,625 sq. ft., Type 6A: 1,636 sq. ft., Villa: Type A1: 2,422+851 sq. ft., Type B1: 3,165+689 sq. ft., Type C: 2,239+452 sq. ft., Type A2: 2,400+549 sq. ft., Type A3: 2,497+1,109 sq. ft., Type B2: 3,197 sq. ft. • TOTAL UNITS: 896 • SELLING PRICE: RM1,067,000 (Min) - RM6,351,000 (Max) • BUMIPUTERA DISCOUNT: 5%. All renderings contained in this brochure are artist's impression only.

IKLAN INI TELAH DILULUSKAN OLEH JABATAN PERUMAHAN NEGARA

### Lendlease Track Record

