

 **WINGTAI ASIA +6019-537 8128**

All information contained herein (including specifications, plan measurements and illustrations) are subject to amendments, variations and modifications without notification as may be required by the relevant authorities or the developer's consultants and is not intended to form and cannot form part of an offer or contract. Whilst every reasonable care has been taken in preparing this information, the developer cannot be held liable for any variations or inaccuracy.



*Nableton Crest*

26, JALAN U-THANT

KUALA LUMPUR

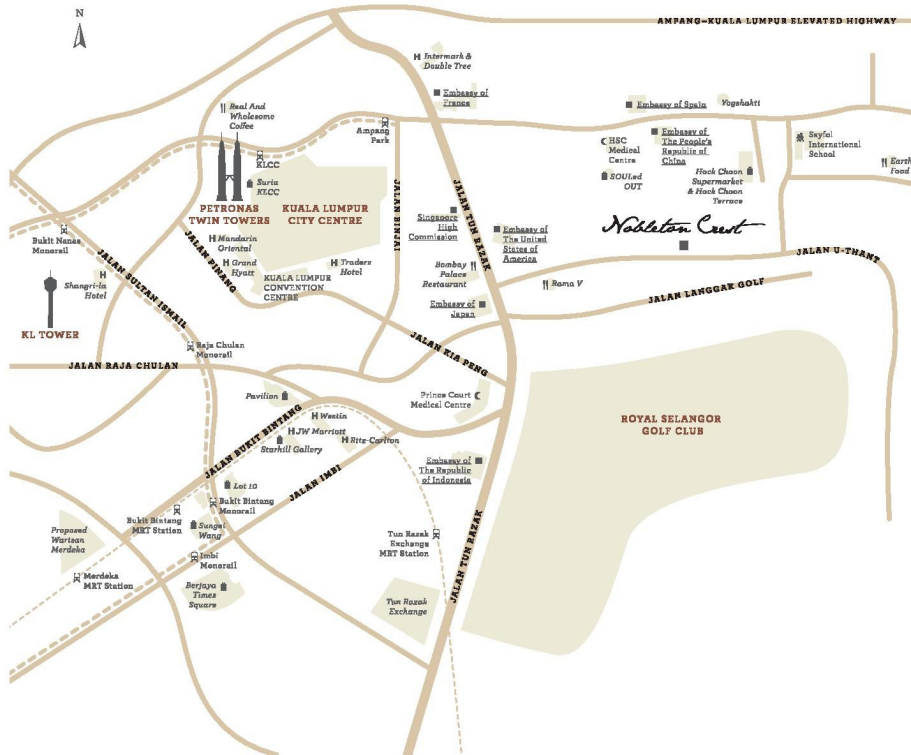


ONLY 25 ULTRA-GRACIOUS APARTMENTS IN THE  
NOBLE HEART OF U-THANT, KUALA LUMPUR

---

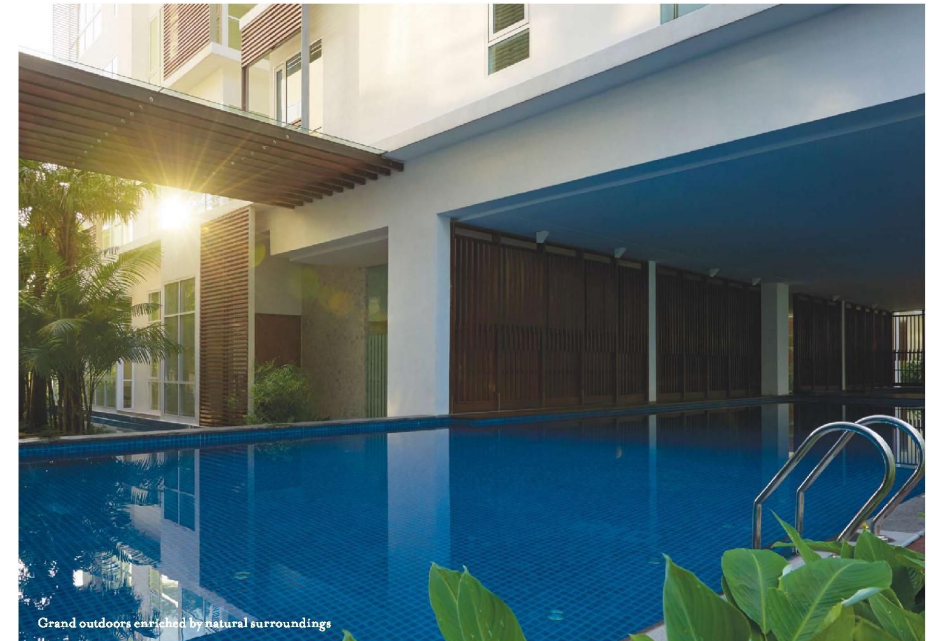
Jalan U-Thant is the dignified diplomatic enclave of Kuala Lumpur, a serene, leafy tree-lined road of mature rainforest trees, just a breath away from the private Royal Selangor Golf Club and minutes from the iconic Petronas Twin Towers and the many multinational corporation offices in the city centre.

## A characterful location



This is your quiet piece of Kuala Lumpur. Yet all the attractions and benefits of city centre living are just around the corner. Nobleton Crest enjoys close proximity to some special places in town. A typical day could include a few sun salutations at Yogshakti on Jalan Ampang, followed by a healthy vegetarian brunch with the ladies at Real and Wholesome Coffee further down the road or Earth Food closer to home.

## The ambience of gracious villas

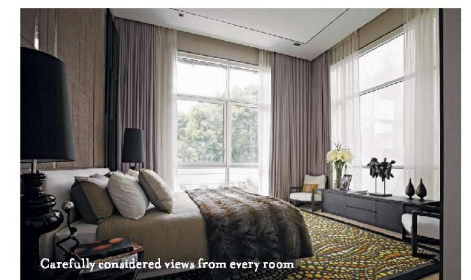


Grand outdoors enriched by natural surroundings

This distinctly upper-class neighbourhood has charmed expatriates and locals alike with its quiet, unpretentious character and easy living amongst the many stores and conveniences nearby.

### DEVELOPMENT DETAILS

- Freehold, low density development
- Only 25 apartments, each with private lift lobby
- Penthouses with private pools
- 4-bedroom apartments ranging from 3,500 sq ft – 6,600 sq ft



Carefully considered views from every room



## *A celebration of spaciousness*

### FEATURES

- Expansive, open plan living/dining areas
- Private lift lobby
- Airy spaces; 3 metre high ceilings
- Smart Home System for integrated lighting, air-cond and ceiling fan controls
- Biometric reader at private lift lobby
- Video intercom and biometric reader at main entrance door to each apartment
- 2 parking bays per unit (penthouses with 4 bays)

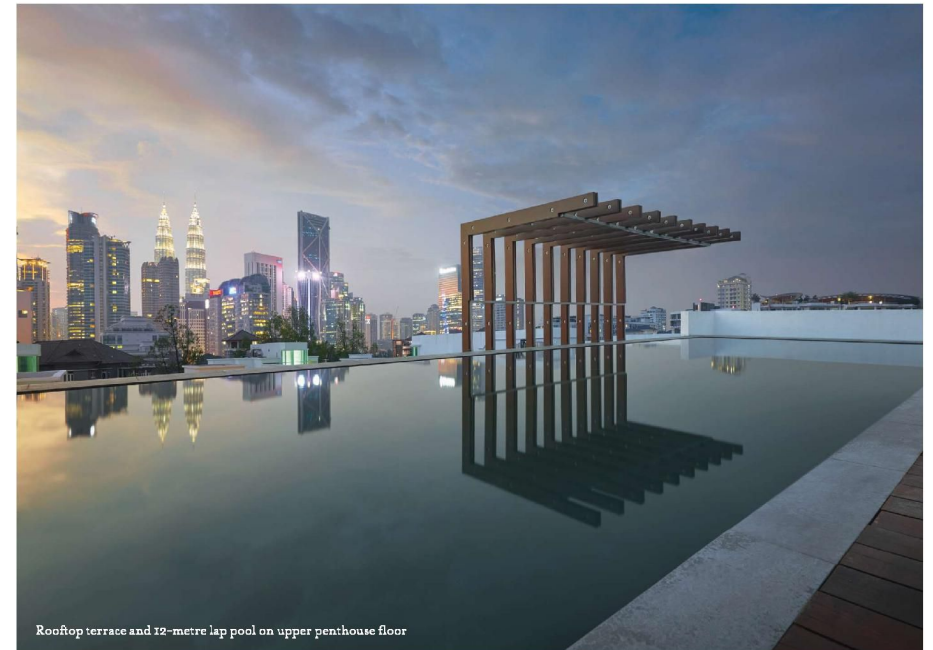
### FINISHINGS

- Imported marble flooring (living, dining, entertainment areas, powder room, bathrooms)
- Solid timber flooring (bedrooms)
- Fully fitted bathrooms with marble counter top, vanity cabinet, mirror and tempered glass screens
- Quality sanitary wares and fittings for the bathrooms



Spacious open concept living room with 3 metre high ceiling

## *Inviting environments*

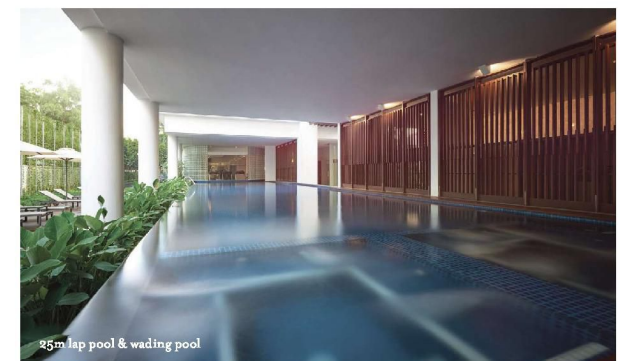


Rooftop terrace and 12-metre lap pool on upper penthouse floor

Apartment at Nobleton Crest residences are veritable mansions by city standards. Each unit is serviced by a private lift. With expansive living spaces and ample amenities, the apartments are designed to be like Italian palazzos.

### FACILITIES

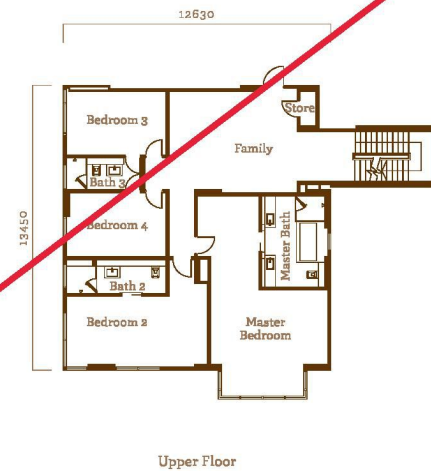
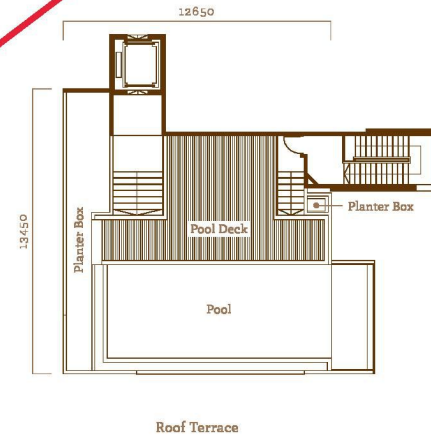
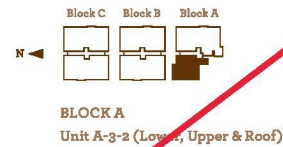
- 25m lap pool & wading pool
- Gymnasium
- Children's play area
- Multipurpose hall
- Jogging path
- Landscaped garden and water features
- Barbecue pit



25m lap pool & wading pool

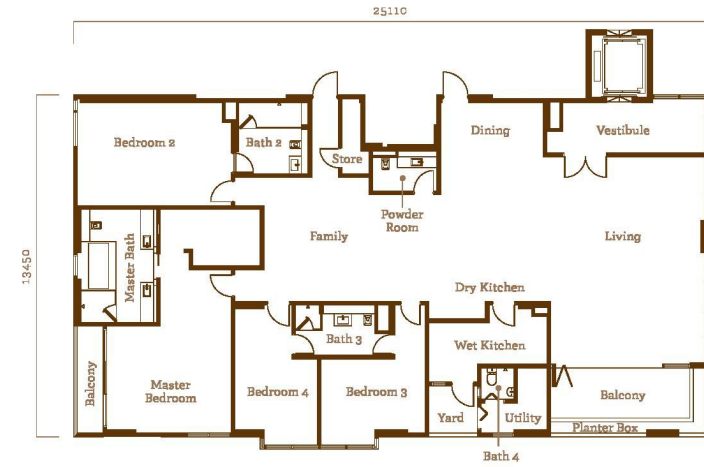
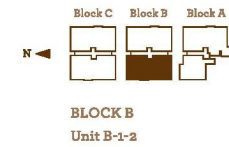
## Triplex Type A5

5,834sf / 542sm  
4 Bedrooms



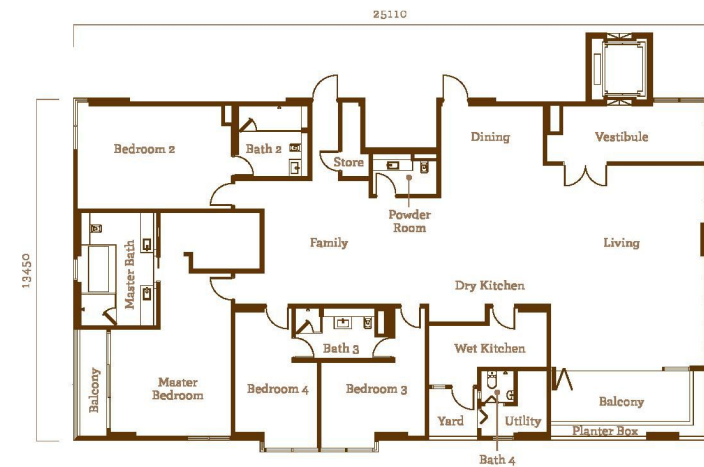
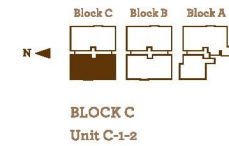
## Simplex Type B2

3,563sf / 331sm  
4 Bedrooms



## Simplex Type C2

3,563sf / 331sm  
4 Bedrooms

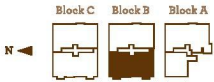


Duplex (Penthouse)

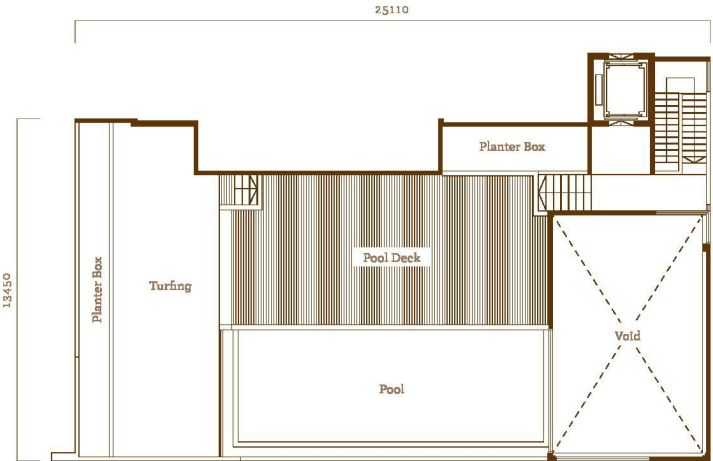
Type B8

6,491sf / 603sm

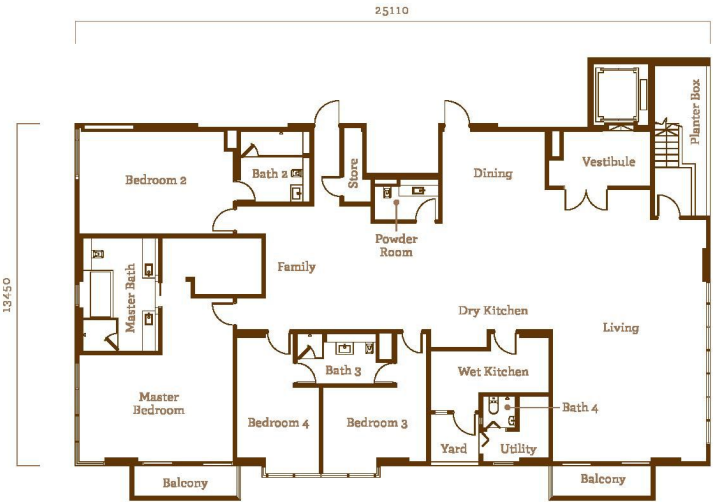
4 Bedrooms



BLOCK B  
Unit B-3A-2 (Lower & Roof)



Roof Terrace



Lower Floor